

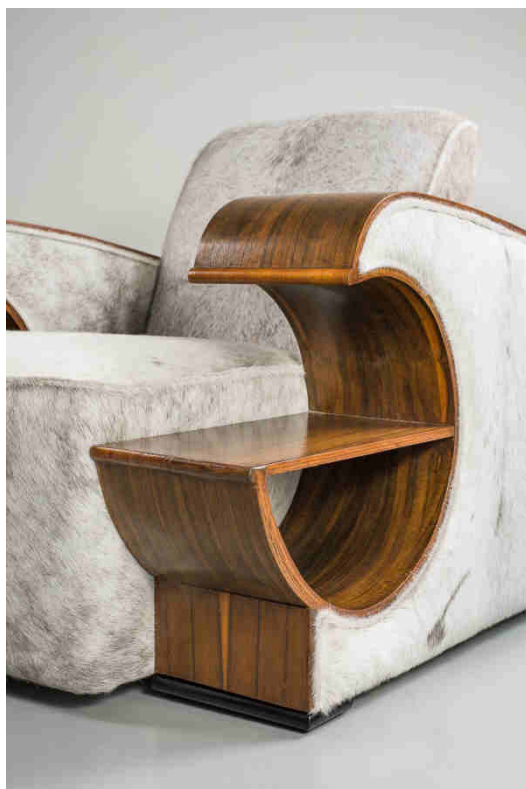
**Collection**

*Pair of Easy-chairs – 1920/1930*

---



*Paire de fauteuils 1920/1930 – Recouvrement poulain – Pieds en bois plaqué*  
*Horse hide upholstery – Wooden legs*



<i>Design Name</i>	<i>Pair of Easy Chairs – Art Deco</i>
<i>Design by</i>	<i>Unknown</i>
<i>Materials</i>	<i>Horse hide upholstery Varnished wood veneer</i>
<i>Colours</i>	<i>Natural</i>
<i>Size</i>	<i>Length 100 cm (3,28ft) Seat height 42 cm (1,38ft) Depth 100 cm (3,28ft) Total Height 80 cm (2,62ft)</i>
<i>Circa</i>	<i>1920/1930</i>
<i>Origin</i>	<i>Sweden</i>